

# DAVID ZEIBIN

MArch BSc

309 – 2490 Stephens Street  
Vancouver BC V6K 3W9  
Canada

1.604.220.6921  
david@zeibin.com  
www.zeibin.com

## SAMPLE PORTFOLIO

## DAVID ZEIBIN

MArch BSc

309 – 2490 Stephens Street  
Vancouver BC V6K 3W9  
Canada

1.604.220.6921  
david@zeibin.com  
www.zeibin.com

### INTERPLEXURE: THE BUSTLER



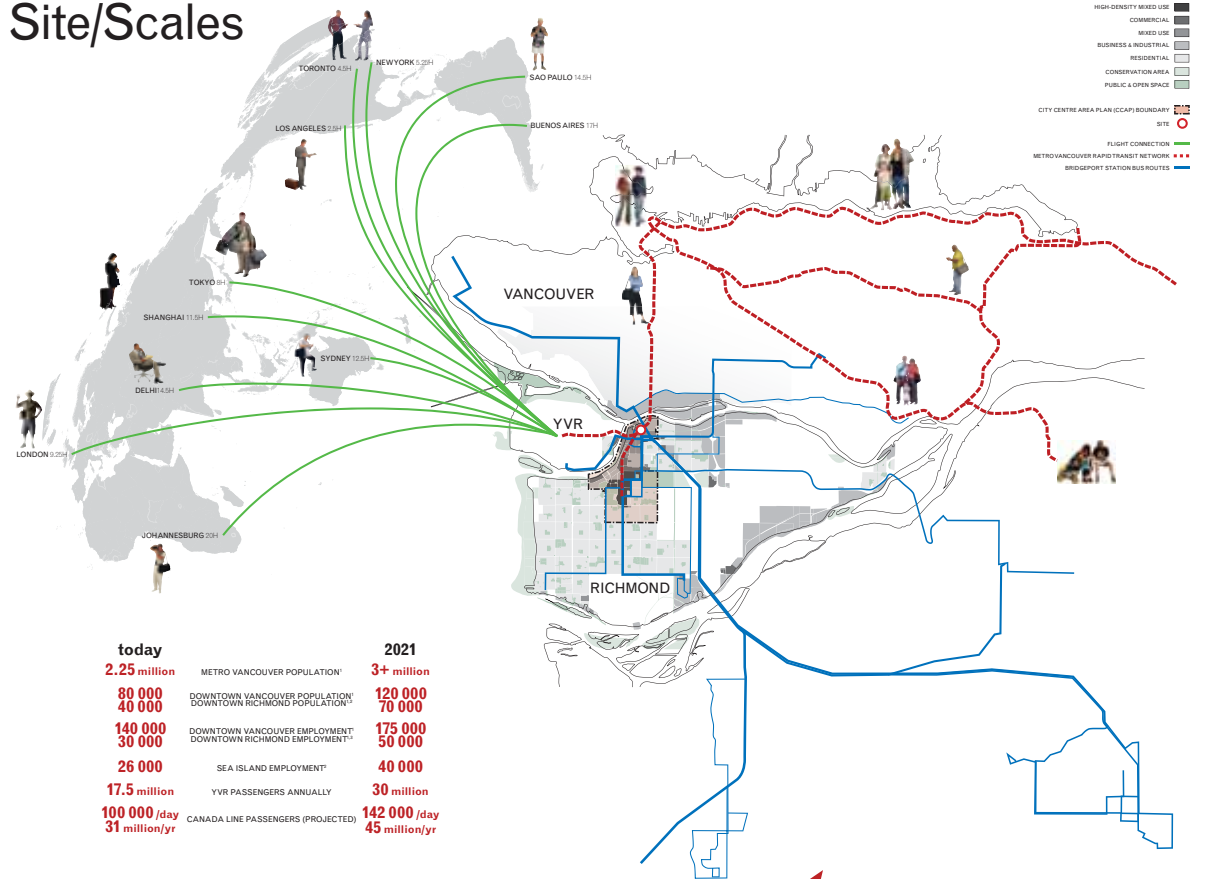
In 2009, the Canada Line will begin operation, altering the perceptual distance between Vancouver, Richmond, and the Vancouver International Airport (YVR). As the topological centre of this new line, Bridgeport Station will be a conduit for both local and global travellers. In contrast with typical elevated transit stations, which tend to generate urban voids in their immediate vicinity, a series of superimposed (infrastructural) systems are proposed to negotiate spatial separations and to integrate the site's diverse and transitional surroundings with the transience of the commuter hub. The resulting alternative urban surface enables a versatile, multivalent public space, anticipating its urban future.

*Thesis/Graduation Project (advisor: Mari Fujita), 2008*



**INTERPLEXURE:  
THE BUSTLER**

**Site/Scales**

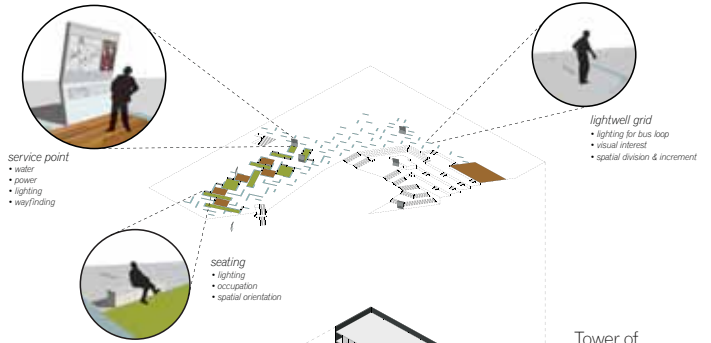






# Systems Techniques

**Services** allocate|provide  
provides enabling facilities  
promotes certain activities through modest variations

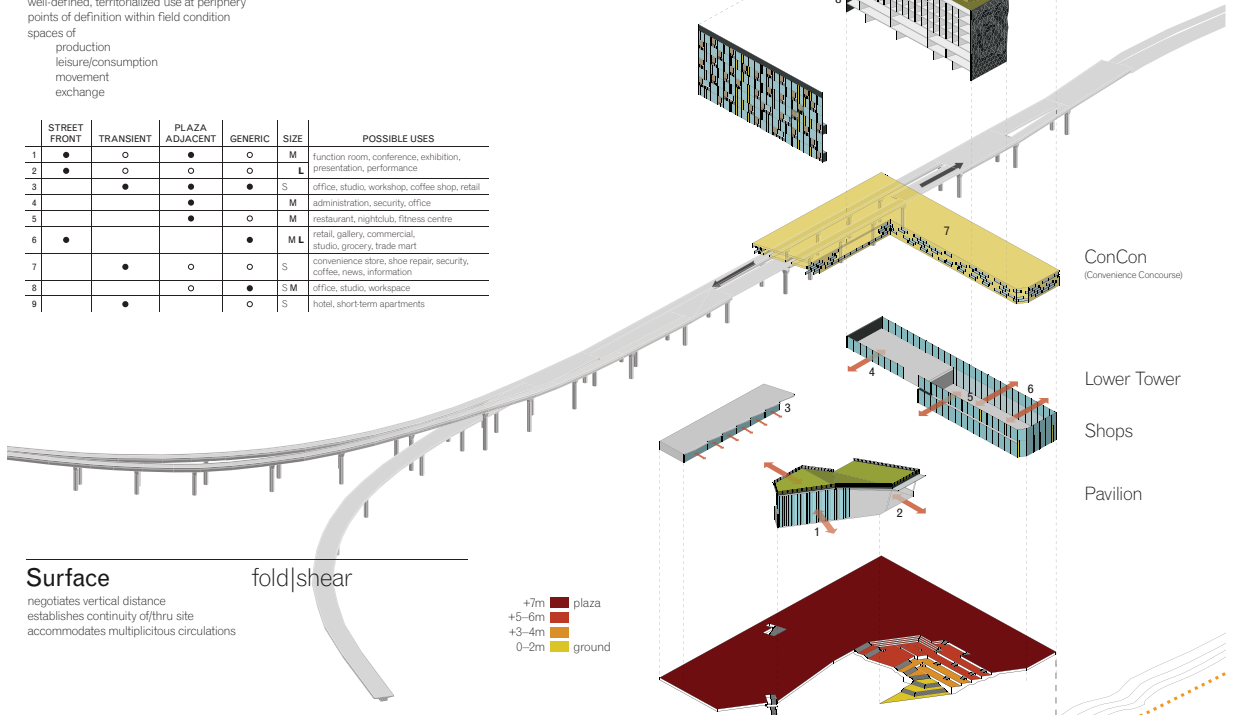


## INTERPLEXURE: THE BUSTLER

**Precincts** de|territorialize

well-defined, territorialized use at periphery  
points of definition within field condition  
spaces of  
production  
leisure/consumption  
movement  
exchange

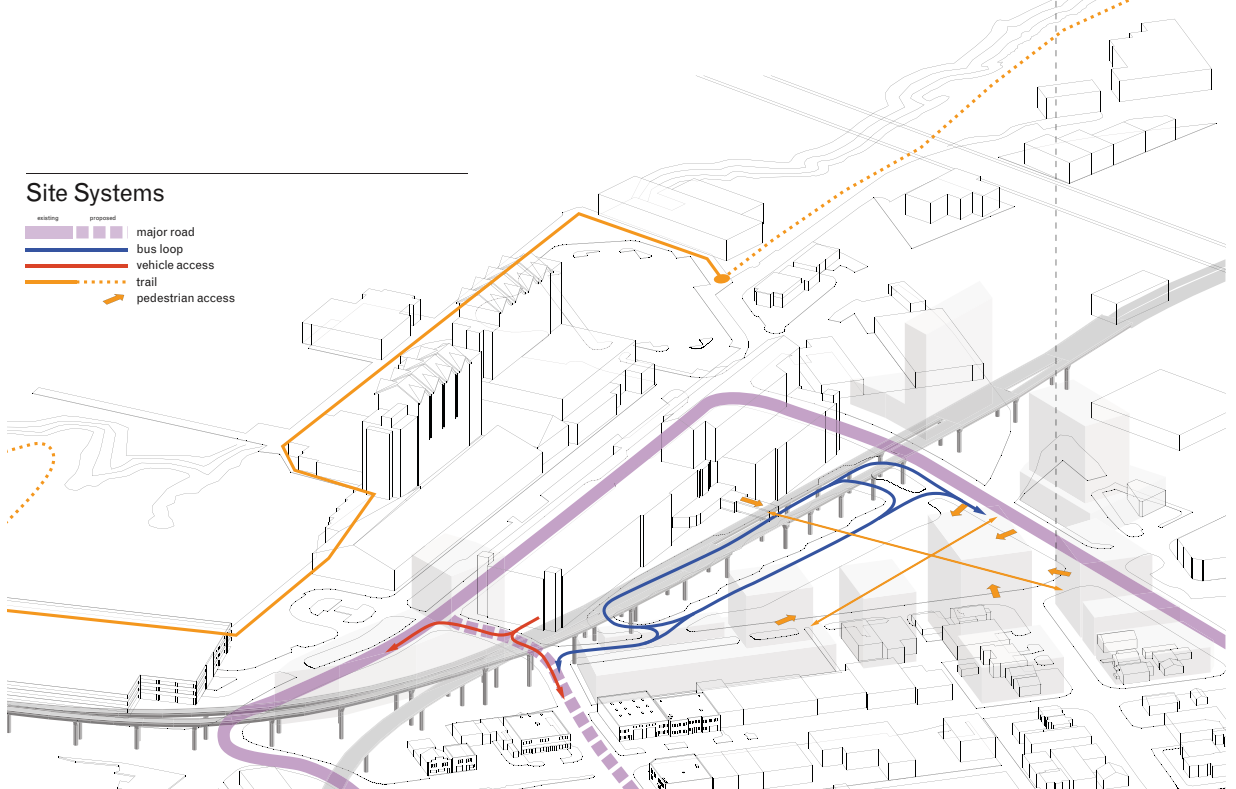
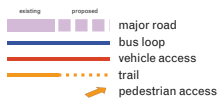
	STREET FRONT	TRANSIENT	PLAZA ADJACENT	GENERIC	SIZE	POSSIBLE USES
1	●	○	●	○	M	function room, conference, exhibition, presentation, performance
2	●	○	○	○	L	
3		●	●	●	S	office, studio, workshop, coffee shop, retail
4			●	●	M	administration, security, office
5			●	○	M	restaurant, nightclub, fitness centre
6	●			●	M L	retail, gallery, commercial, studio, grocery, trade mart
7		●	○	○	S	convenience store, shoe repair, security, coffee, news, information
8			○	●	S M	office, studio, workspace
9		●		○	S	hotel, short-term apartments



**Surface** fold|shear

negotiates vertical distance  
establishes continuity of thru site  
accommodates multiplicitous circulations

### Site Systems



**DAVID ZEIBIN**  
MArch BSc

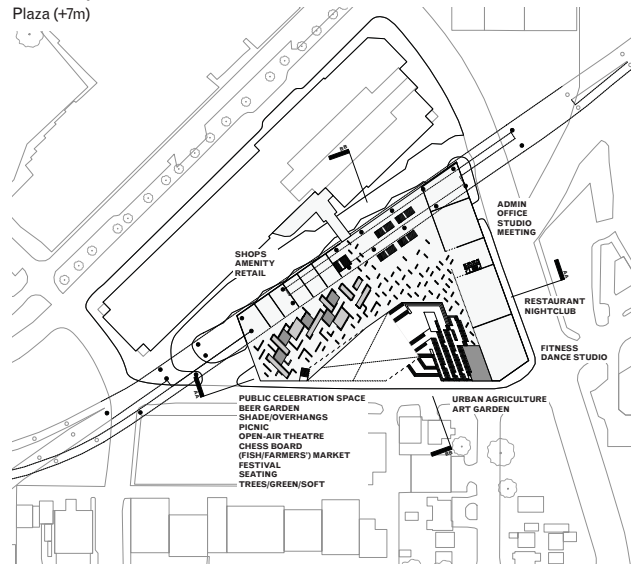
309 – 2490 Stephens Street  
Vancouver BC V6K 3W9  
Canada

1.604.220.6921  
david@zeibin.com  
www.zeibin.com

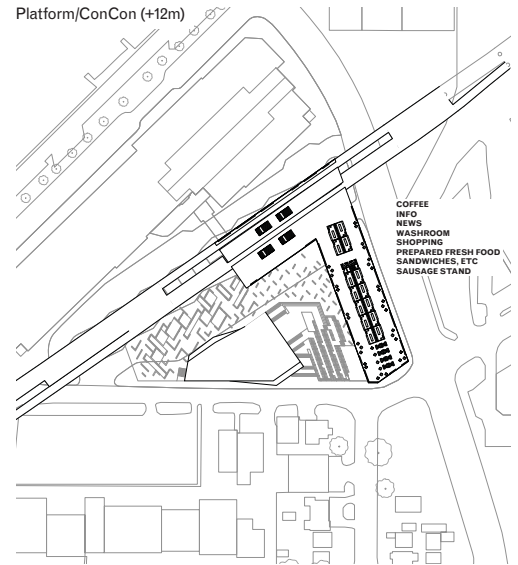
**INTERPLEXURE:  
THE BUSTLER**

**Plans/Sections**

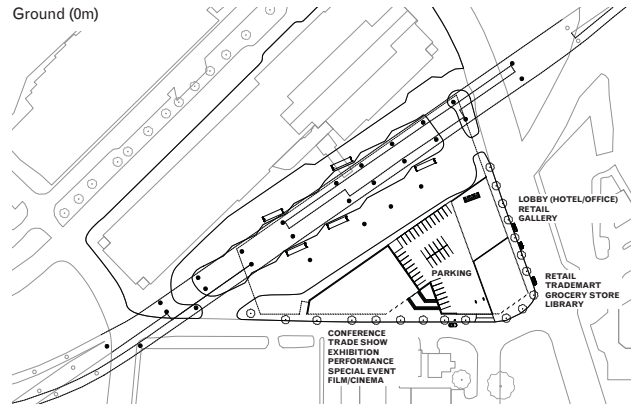
Plaza (+7m)



Platform/ConCon (+12m)



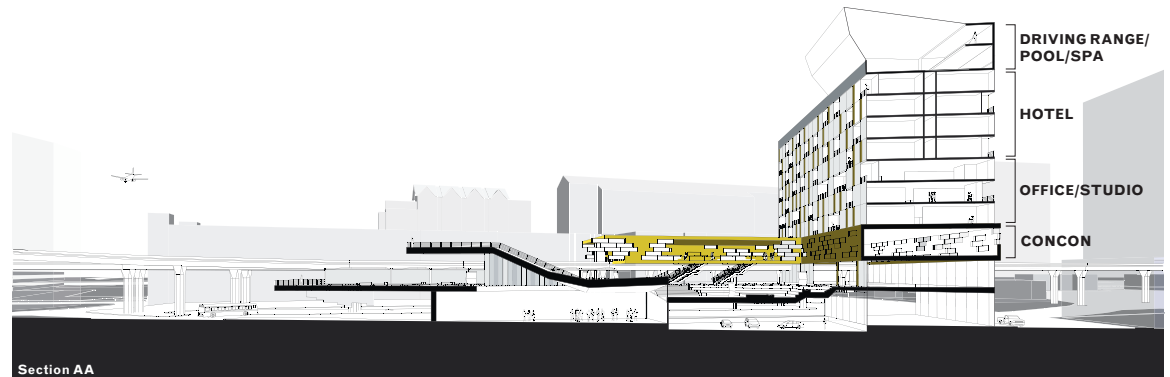
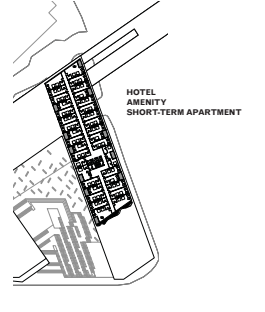
Ground (0m)



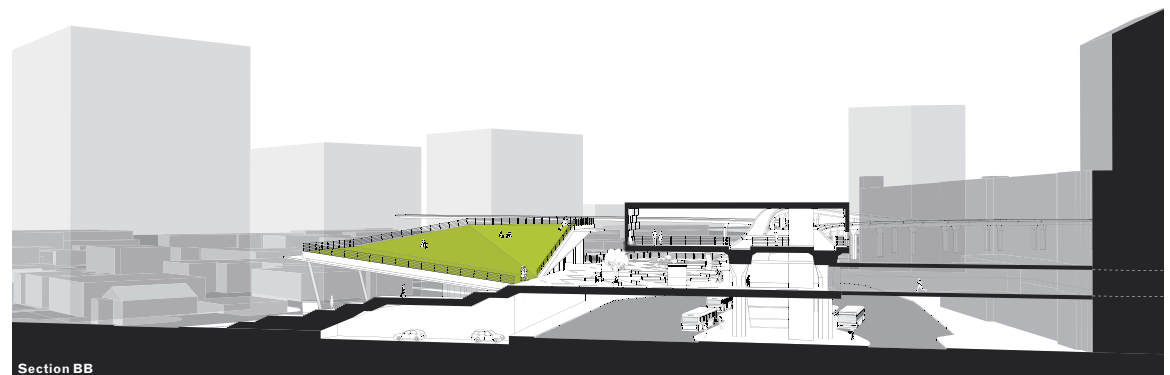
Typical Office Floor



Typical Hotel Floor



Section AA



Section BB

**DAVID ZEIBIN**  
MArch BSc

309 – 2490 Stephens Street  
Vancouver BC V6K 3W9  
Canada

1.604.220.6921  
david@zeibin.com  
www.zeibin.com

**INTERPLEXURE:  
THE BUSTLER**





# DAVID ZEIBIN

MArch BSc

309 – 2490 Stephens Street  
Vancouver BC V6K 3W9  
Canada

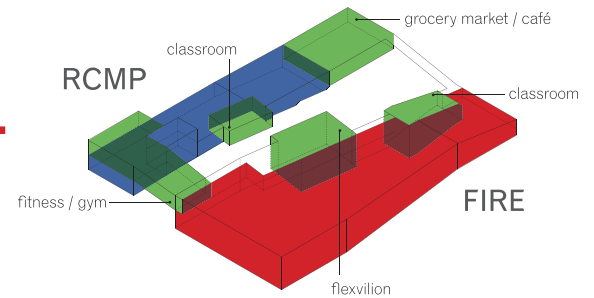
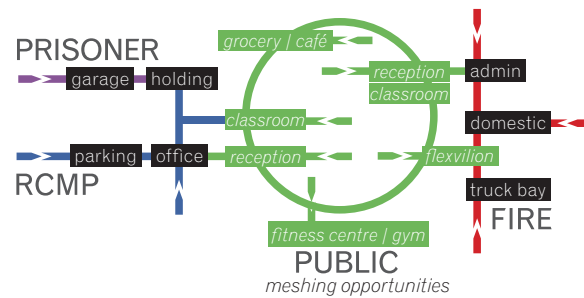
1.604.220.6921  
david@zeibin.com  
www.zeibin.com

## DRIFT



*Drift* is an emergency services facility combining an RCMP detachment and a fire hall. The spatial configuration confronts the relationship between these typically hermetic institutions of protection and security, and the public they serve. In distilling these institutions from the public realm, a permeable, linear public space runs the length of the new facility and belies the structure's monolithic outer appearance. Largely transparent spaces on this exteriorized interior provide moments of glancing contact and architectural voyeurism, exposing the building's multifarious activities.

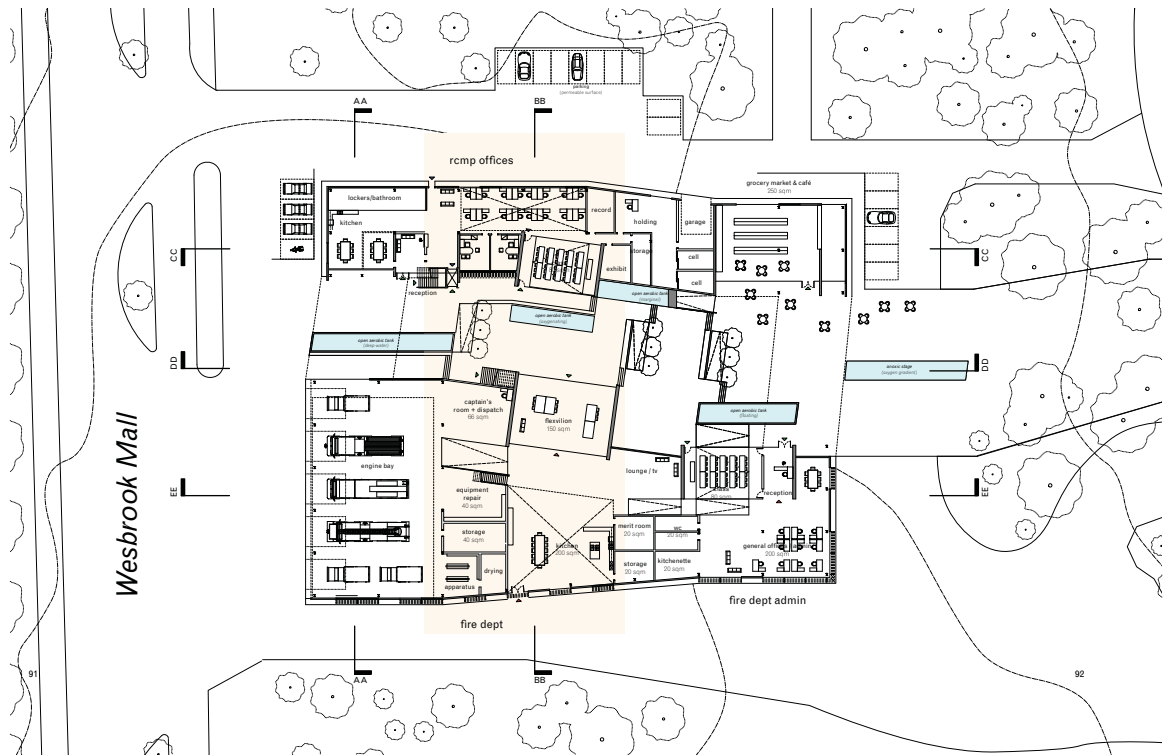
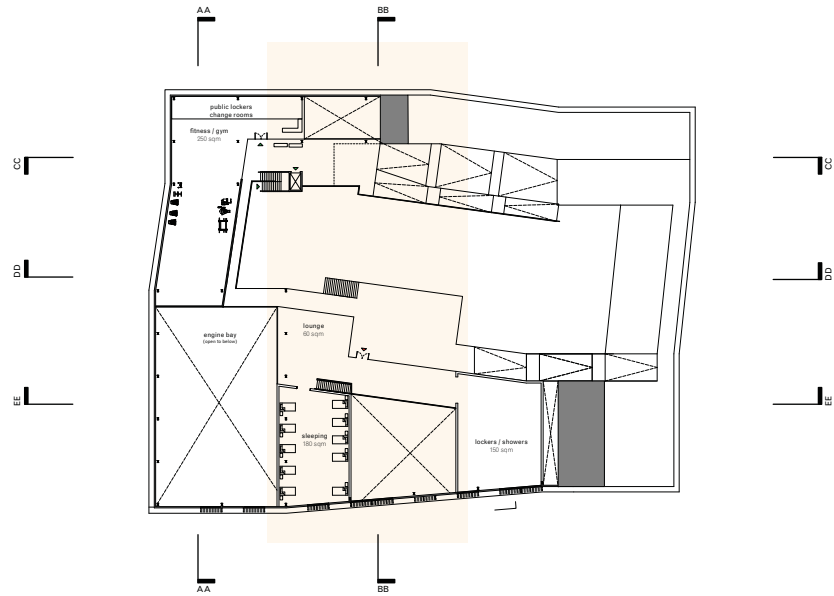
*Comprehensive Building Studio (mentor: John Bass), with Goran Jakovljevic, 2007*



1:50 sectional model



**DRIFT**



ground-level plan



1:50 sectional model, detail

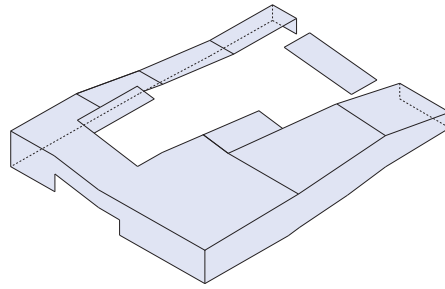
**DAVID ZEIBIN**  
MArch BSc

309 – 2490 Stephens Street  
Vancouver BC V6K 3W9  
Canada

1.604.220.6921  
david@zeibin.com  
www.zeibin.com

**SYSTEMS**

**SKIN**

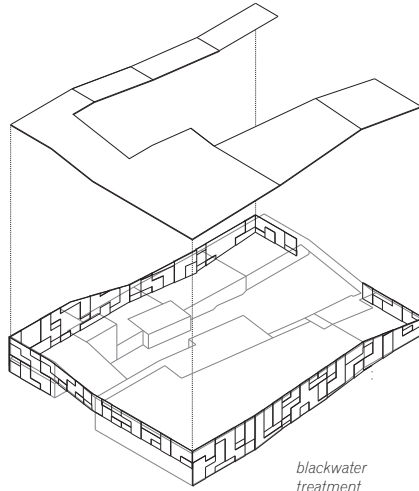


building integrated photovoltaics:  
translucent photovoltaic glass panels

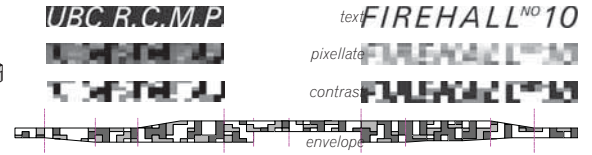


**DRIFT**

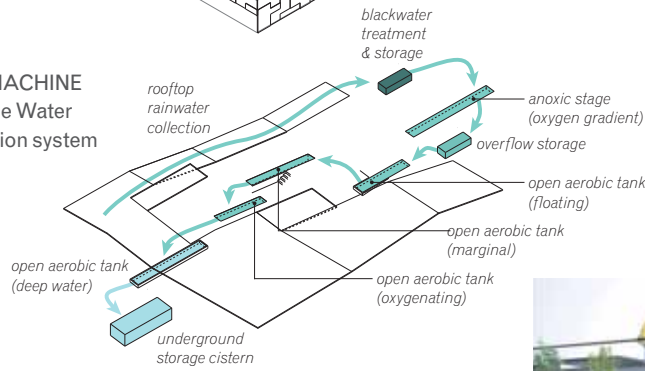
**ENVELOPE**



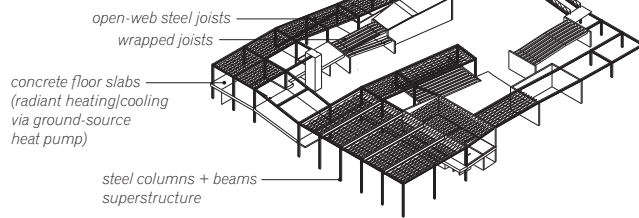
**Facade Study**



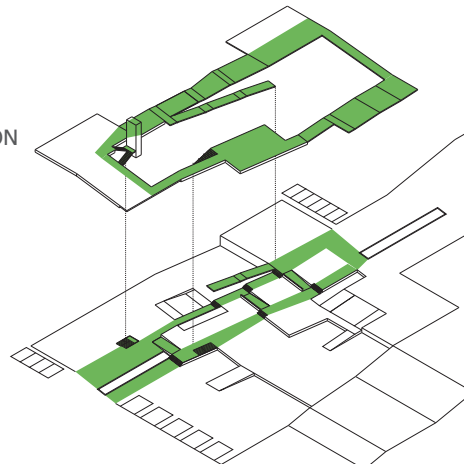
**LIVING MACHINE**  
**Five-Stage Water Reclamation system**



**STRUCTURE**



**CIRCULATION**



# DAVID ZEIBIN

MArch BSc

309 – 2490 Stephens Street  
Vancouver BC V6K 3W9  
Canada

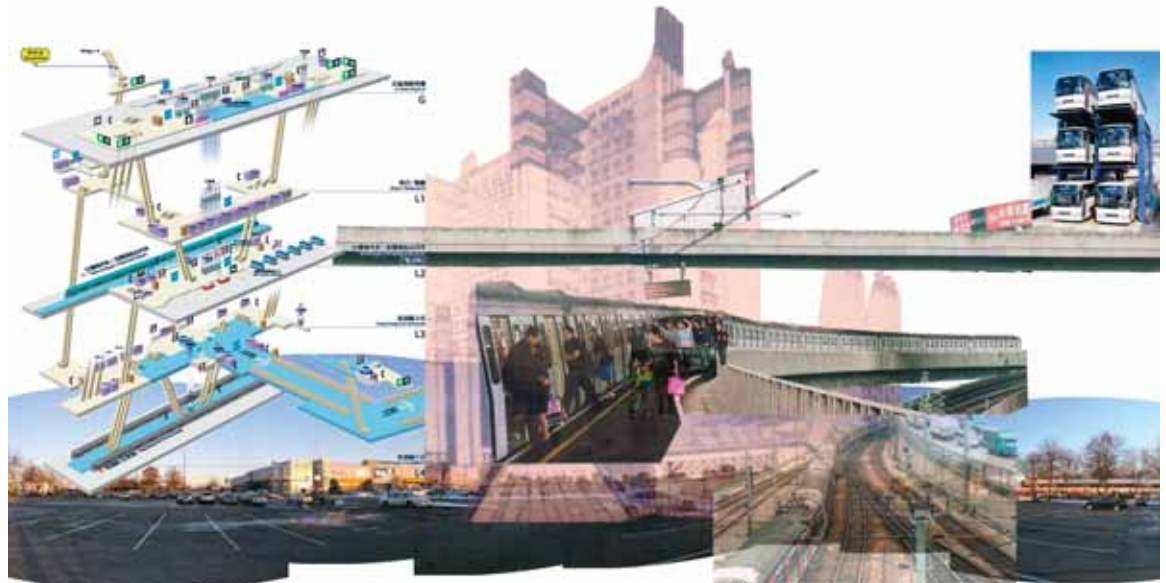
1.604.220.6921  
david@zeibin.com  
www.zeibin.com

## PRECIPITATE



For an “urban centre,” Richmond is awesome in its empty vastness, to the point of absurdity. Hopes to transform No. 3 Road—the main north-south arterial street—and Lansdowne Road into vibrant city streetscapes capitalize on major developments such as the south branch of the soon-to-be Canada Line and the 2010 Olympics speedskating oval/ multi-use complex. The current investigations and speculations hope to introduce, in the most general terms, diversity to a rather mundane landscape. This diversity is not limited to simply topography or an expanse of multi-use megastructure. Richmond’s cultural diversity provides a conceptual framework for an architecture unique to Richmond, one that reflects the hopes and desires of its residents.

*Uncertainties + Opportunities Studio  
(mentor: Oliver Lang), 2005*





**DAVID ZEIBIN**  
MArch BSc

309 – 2490 Stephens Street  
Vancouver BC V6K 3W9  
Canada

1.604.220.6921  
david@zeibin.com  
www.zeibin.com

**PRECIPITATE**



# DAVID ZEIBIN

MArch BSc

309 – 2490 Stephens Street  
Vancouver BC V6K 3W9  
Canada

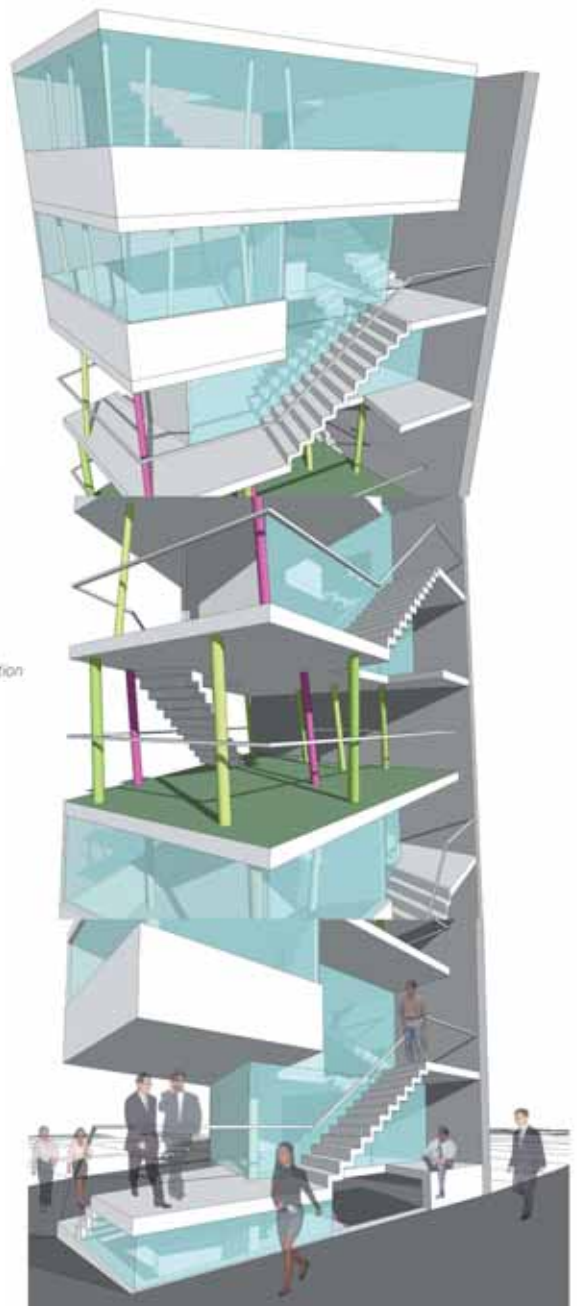
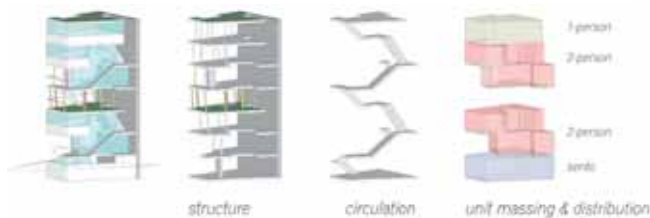
1.604.220.6921  
david@zeibin.com  
www.zeibin.com

## HANG LOOSE, TOKYO!



*Hang Loose, Tokyo!* is a multi-unit residential mansion (apartment building) located on a constrained site near Uguisudani and Iriya stations in Tokyo. The project negotiates the provision of generous domestic spaces and the pragmatic constraints: tight lot dimensions, zoning, and building codes. The design provides three living spaces of varying scales, suitable for one or two people, or a small family, as well as two exterior garden levels and a building sento in the basement.

*UBC Architecture TOKYO 2006 Studio (mentors: George Wagner, Atsushi Aiba, Souhei Imamura), with Howard Kim, Mark George, Ayane Maekawa, and Yoko Manabe, 2006*





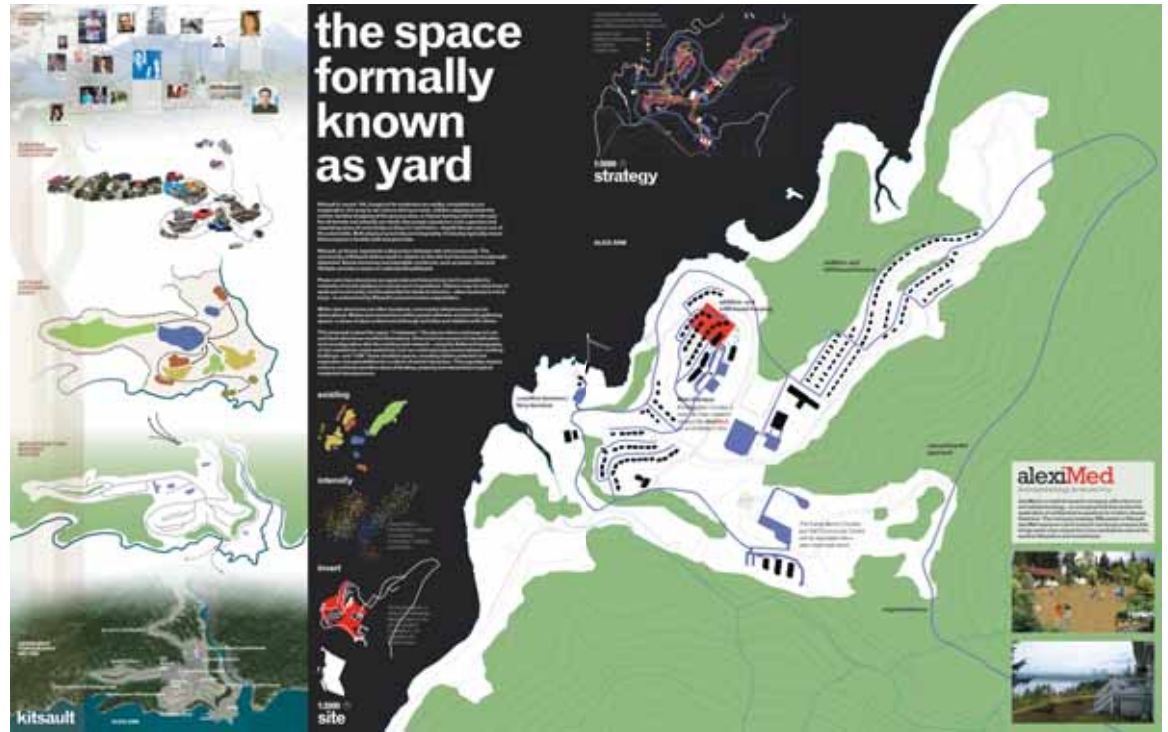
# DAVID ZEIBIN

MArch BSc

309 – 2490 Stephens Street  
Vancouver BC V6K 3W9  
Canada

1.604.220.6921  
david@zeibin.com  
www.zeibin.com

## THE SPACE FORMALLY KNOWN AS YARD



*The Space Formally Known As Yard* is an “urban design” proposal for Kitsault—an abandoned mining town in northern British Columbia. As found, the town represents a disjunction between site and community. Those who once lived there associate with Kitsault via their social structures and other intangible constructs—such as power, class or lifestyle—providing a means of understanding this vacant town.

This proposal is about the space *in between*, the places where exchange occurs and these structures manifest themselves. Concurrent processes of intensification and reconfiguration alter the existing road network (using the flattened topography of old roadsites to create pedestrian and non-vehicular trajectories between existing buildings) and “infill” these resultant spaces, revealing hidden potential and engendering new possibilities for a culture of social interaction. This arguably utopian scheme confronts sensitive ideas of territory, property and ownership in typical residential developments.

*Import Import Studio (mentor: Mari Fujita), 2006*







**constituents**

researchers



graduate students



corporate executives



assistants / support



young families



school-aged children



retirees / visitors



**site analysis**

composite



existing



established



potential



latent



location



intervention



**types**

second floor



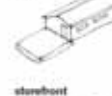
basement



covered patio



slab



storefront



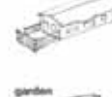
extension



sports court



deck



garden



courtyard / split



**exploded perspective**

trajectories



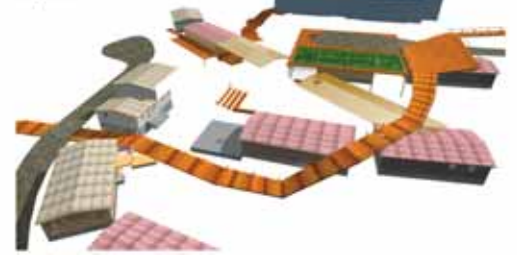
waypoints



existing



composite



**THE SPACE  
FORMALLY  
KNOWN  
AS YARD**

